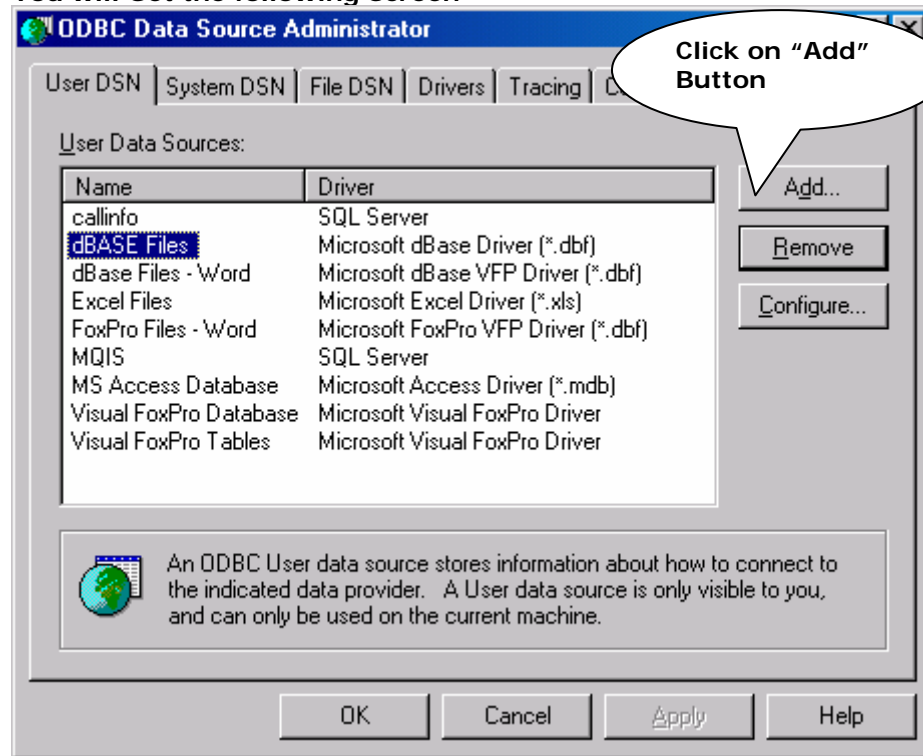
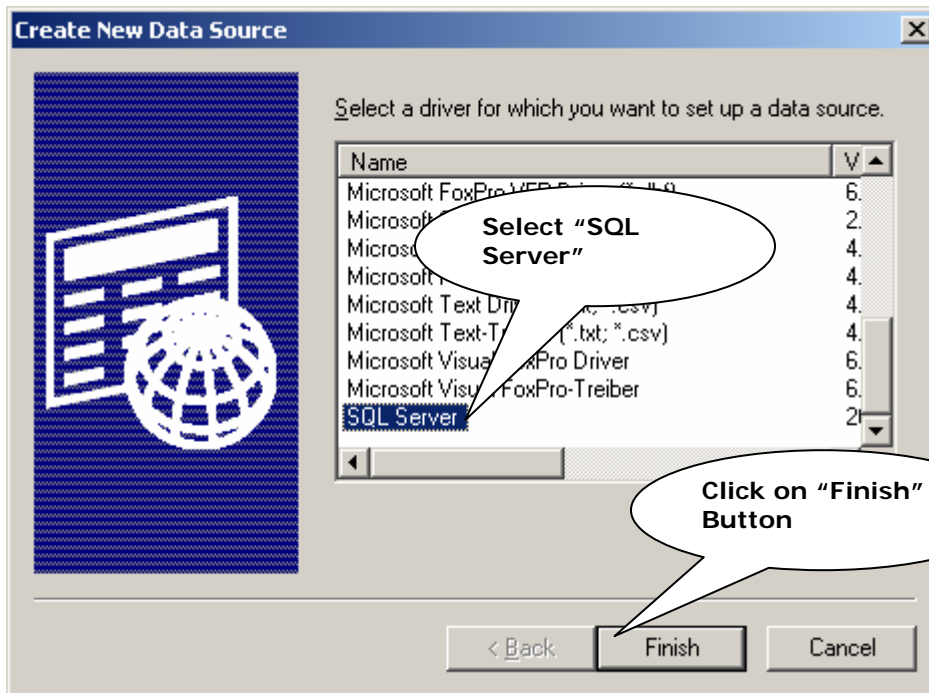


- 1) For Creating DSN go to Start->Settings->Control Panel->Administrative Tools->Click On Data Sources (ODBC)

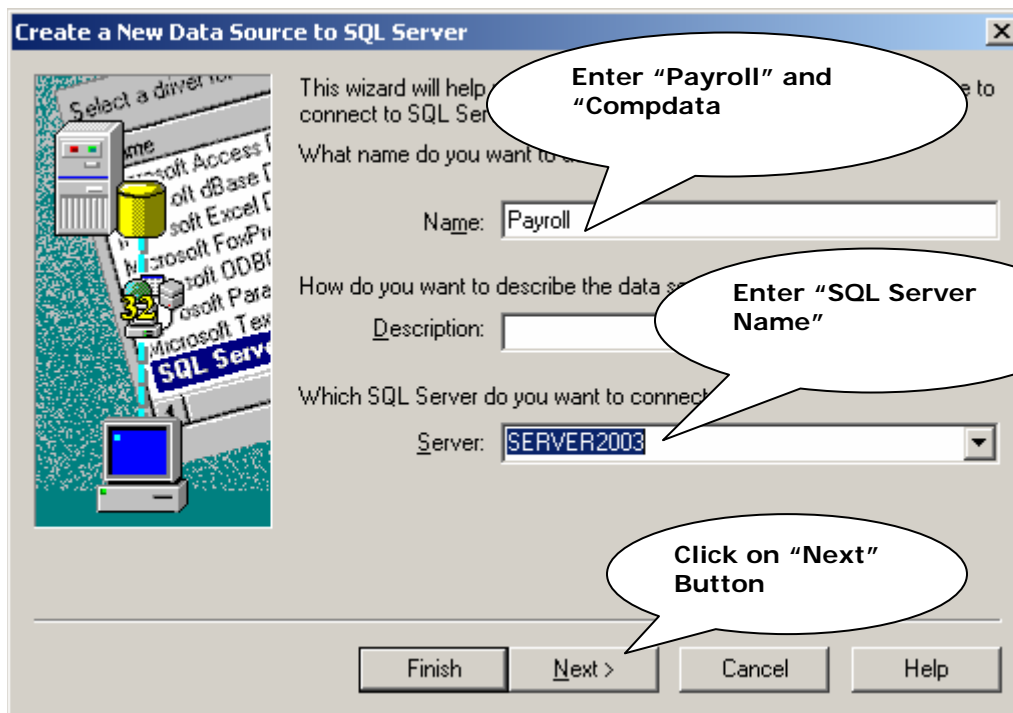
You will Get the following Screen



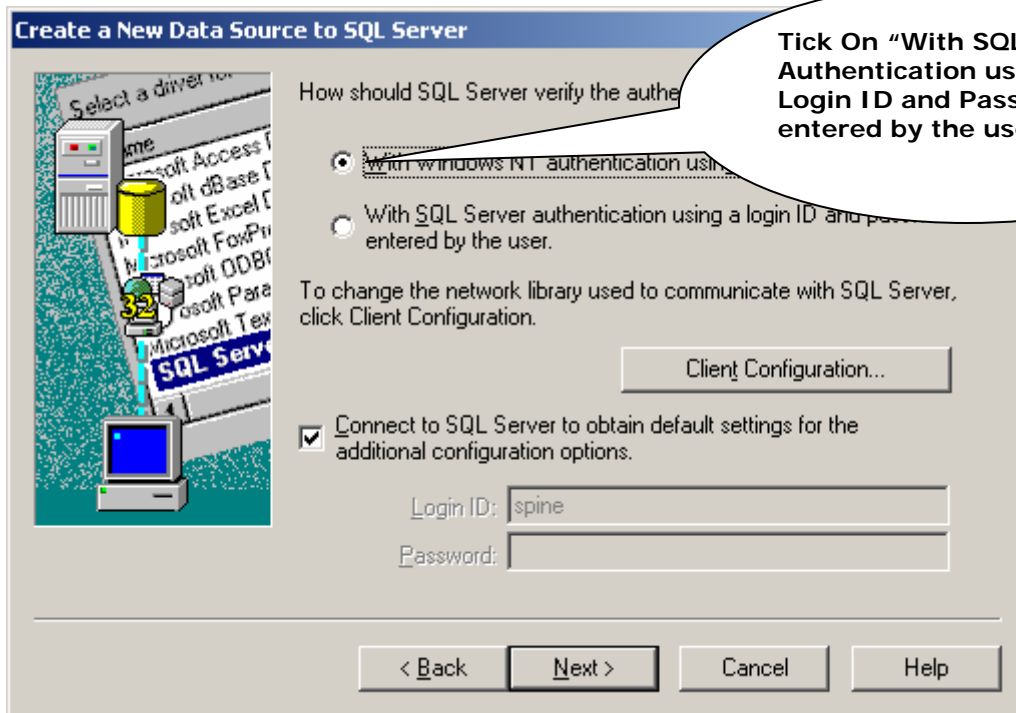
You will Get the following Screen



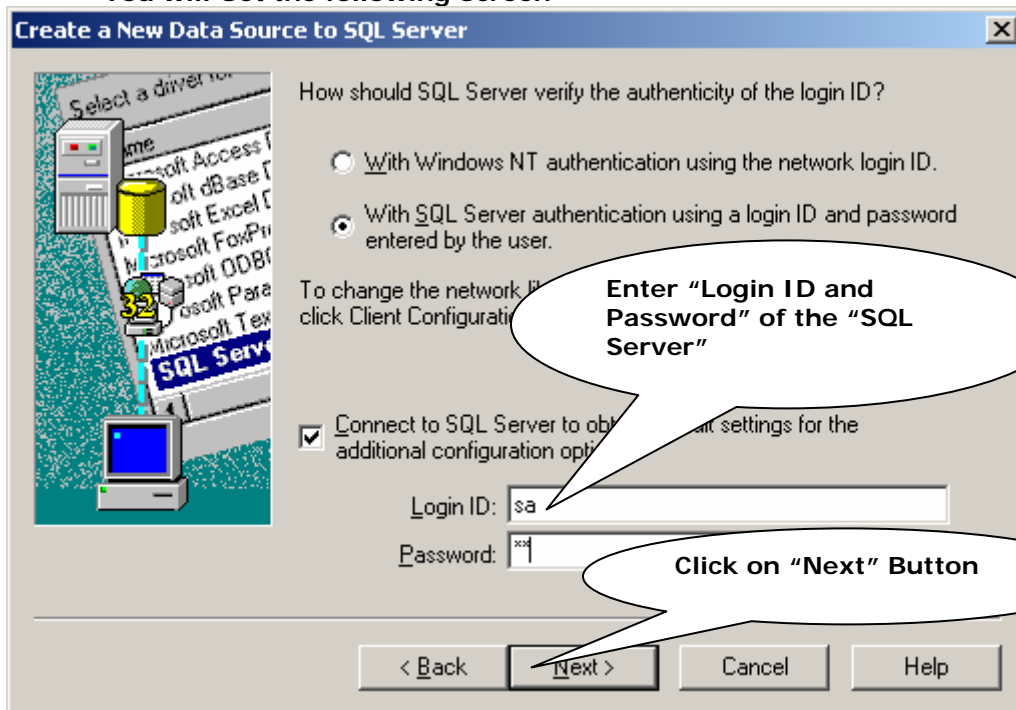
You will Get the following Screen



You will Get the following Screen



You will Get the following Screen



Tick On "Change The default Database to" and select database as "COO1" and "Compdata" respectively

Click on "Next" Button

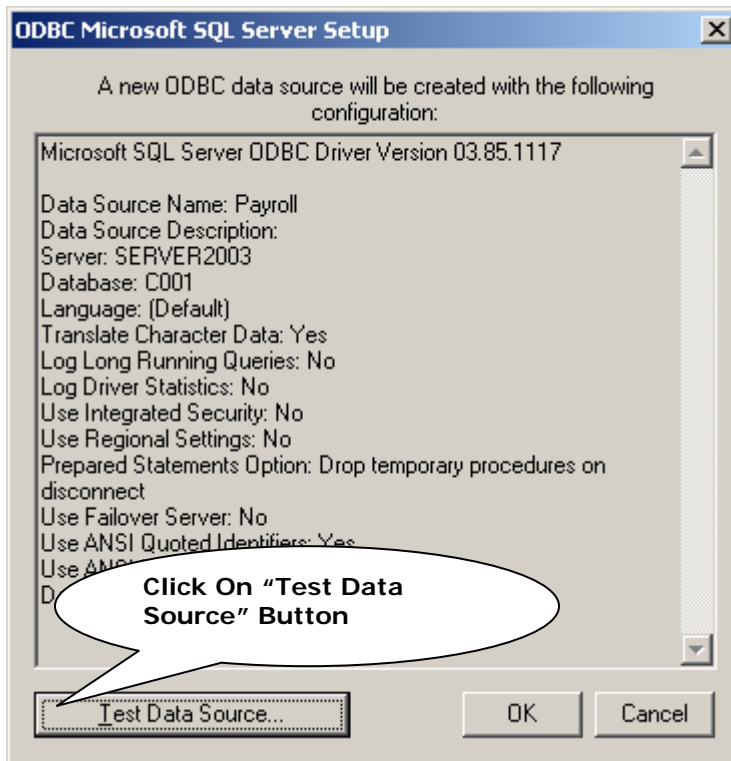
The screenshot shows the 'Create a New Data Source to SQL Server' dialog box. The 'Change the default database to:' dropdown menu is set to 'master'. The 'Attach database filename:' field is empty. The 'Create temporary stored procedures for prepared SQL statements and drop the stored procedures:' checkbox is checked, with radio buttons for 'Only when you disconnect.' (selected) and 'When you disconnect and as appropriate while you are connected.'. The 'Use ANSI quoted identifiers.', 'Use ANSI nulls, paddings and', and 'Use the failover SQL Server available.' checkboxes are also checked. The 'Next >' button is highlighted with a callout.

You will Get the following Screen

Click on "Finish" Button

The screenshot shows the 'Create a New Data Source to SQL Server' dialog box with advanced options. The 'Change the language of SQL Server system messages to:' dropdown menu is set to 'English'. The 'Use strong encryption for data' checkbox is unchecked. The 'Perform translation for character data' checkbox is checked. The 'Use regional settings when outputting currency, numbers, dates and times.' checkbox is unchecked. The 'Save long running queries to the log file:' checkbox is unchecked, with the file path 'C:\DOCUME~1\spine\LOCALS~1\Temp\QUERY.' and a 'Browse...' button. The 'Long query time (milliseconds):' field is set to '30000'. The 'Log ODBC driver statistics to the log file:' checkbox is unchecked, with the file path 'C:\DOCUME~1\spine\LOCALS~1\Temp\QUERY.' and a 'Browse...' button. The 'Finish' button is highlighted with a callout.

You will Get the following Screen



You will Get the following Screen

